

## Certificate Of Conformity to EN14960:2019

This certificate relates only to the individual product detailed below. It confirms that at the time of manufacture this product conforms to EN14960. To remain compliant this product must be tested annually.

To book your test please call +44 (0)1179 414 918 or visit [www.airquee.com](http://www.airquee.com) for more information.

**This is the test certificate for your new inflatable. Please keep this in a safe place. This is valid for one year from the date below.**

**Product:** 27ft Obstacle Course Party (Foam Mats)  
**Serial No:** P49000  
**Code:** PA0005PA  
**Valid From:** 31-03-2022  
**Certificate No:** P49000  
**Tag No:** 52721  
**Weight:** Unit: 135kg Total: 156kg

Product Dimensions (m)			
H	W	L	
2.9	2.75	8.1	
User Height (m)			
1	1.25	1.5	
Number of Users			
5	5	5	-

Structure	Pass	Fail	N/A
1 Security Of Seams	X		
2 Stitching	X		
3 Anchor Points	X		
4 Anchor Accessories	X		
5 Walls & Towers	X		
6 Blower Tube(s) / Valve(s)	X		
7 Zip(s)	X		
8 Fabric Flame Retardant	X		
9 Fabric Strength	X		
10 Step / Ramp Size	X		
11 Grounding	X		
12 Sharp Angles	X		
13 Stability	X		
14 Ropes			X
15 Artwork	X		
16 Air Loss Points	X		
17 Water Gauge Pressure (WGP) / Pressure (mbar)	X		
18 Fall Off Height (FOH)	X		
19 Trough Depth	X		
20 Thread	X		
21 Netting	X		
22 Entrapment	X		
23 Deflation / Evacuation Time	X		
24 Windows			X
25 Markings	X		
26 Identification	X		
<b>Totally Enclosed Structures</b>			
27 Exits			X
28 Exit Markings			X
29 Lighting Supports			X
30 Emergency Lighting			X
31 Deflation Speed			X
32 User Area Pressure			X
<b>Slides</b>			
33 Wall Height / Platform Height	X		
34 Run-Out	X		
35 Clamber Step	X		
36 Slide Sheet	X		
<b>Blower</b>			
37 Size & Type	X		
38 Inlet & Outlet Mesh	X		
39 Cable & Plug	X		
40 Casing & Impeller	X		
41 Pat Test			X
42 Return Flap	X		

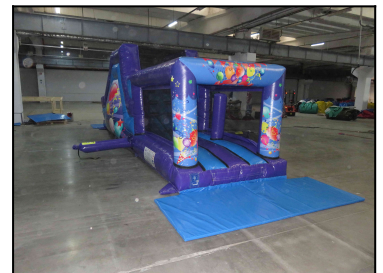
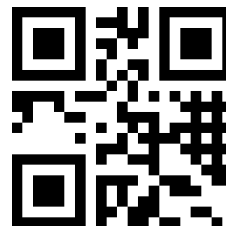
Notes	
Material : gloss 630g pvc+ 520 g printable material	
Anchor points: 8 pcs PVC & metal triangle Bottom Supplied anchor accessories: 8 pcs / 400 mm* 18 mm metal pegs Inside wall height: 1.53 m Blower tube length: 1.47 m Position: 1 pcs left side + 1 pcs right side Zips: 2 pcs (exterior velcro flap + interior non return flap)	
Platform height : 0.63 m Step depth : 0.98 m	
Artwork : printed (laminated, UV resistant)	
WGP: 5.2 inch /12.95 mbar FOH: 0.52 m	
Netting: black scrim fixed Roof : black scrim fixed	
Notes	
Notes	
Wall height: 0.86 m Platform height: 2 m Run out: 1.34 m Width of slide: 1.38 m Slide sheet: ice blue sliding material PVC	
Notes	
Blower power: 1 pcs 1.5HP Accessories :4 x crash mats 3cm EPE foam	

SIGNED BY: Deák Loránt  
RPII ANNUAL INFLATABLE INSPECTOR



Date of test: 11-03-2022

Airquee Ltd  
Duel House  
Llandowlais Street  
Cwmbran  
NP44 7XB, UK  
Tel: +44 (0)1179 414 918  
Email: [sales@airquee.co.uk](mailto:sales@airquee.co.uk)



To remain compliant this product must be tested annually.